



DHRS2 Polyclonal Antibody

Catalog No	YP-Ab-02619
Isotype	IgG
Reactivity	Human;Mouse
Applications	WB;ELISA
Gene Name	DHRS2
Protein Name	Dehydrogenase/reductase SDR family member 2
Immunogen	The antiserum was produced against synthesized peptide derived from human DHRS2. AA range:111-160
Specificity	DHRS2 Polyclonal Antibody detects endogenous levels of DHRS2 protein.
Formulation	Liquid in PBS containing 50% glycerol, 0.5% BSA and 0.02% sodium azide.
Source	Polyclonal, Rabbit,IgG
Purification	The antibody was affinity-purified from rabbit antiserum by affinity-chromatography using epitope-specific immunogen.
Dilution	Western Blot: 1/500 - 1/2000. ELISA: 1/40000. Not yet tested in other applications.
Concentration	1 mg/ml
Purity	≥90%
Storage Stability	-20°C/1 year
Synonyms	DHRS2; Dehydrogenase/reductase SDR family member 2; Dicarbonyl reductase HEP27; Protein D
Observed Band	27kD
Cell Pathway	Mitochondrion matrix. Nucleus. A minor fraction of the protein is translocated from the mitochondria to the nucleus, after cleavage of the targeting signal.
Tissue Specificity	Widely expressed, with highest levels in liver and kidney, followed by heart, spleen, skeletal muscle and placenta. In hemopoietic cells, expressed in dendritic cells, but not in monocytes, macrophages, granulocytes, nor in B and T lymphocytes.
Function	function:May inhibit cell replication either by catalyzing the oxidation of estrogen and androgen or by converting cortisone in cortisol.,similarity:Belongs to the short-chain dehydrogenases/reductases (SDR) family.,
Background	function:May inhibit cell replication either by catalyzing the oxidation of estrogen and androgen or by converting cortisone in cortisol.,similarity:Belongs to the short-chain dehydrogenases/reductases (SDR) family.,
matters needing attention	Avoid repeated freezing and thawing!



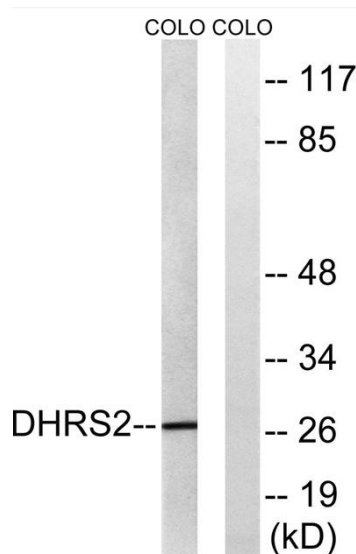
Usage suggestions

This product can be used in immunological reaction related experiments. For more information, please consult technical personnel.

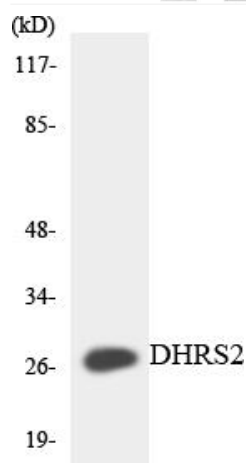
Products Images



Western Blot analysis of various cells using DHRS2 Polyclonal Antibody



Western blot analysis of lysates from COLO cells, using DHRS2 Antibody. The lane on the right is blocked with the synthesized peptide.



Western blot analysis of the lysates from HeLa cells using DHRS2 antibody.